

ECOMCAPTURE

REMOTE, CONNECTED CANISTER SAMPLING



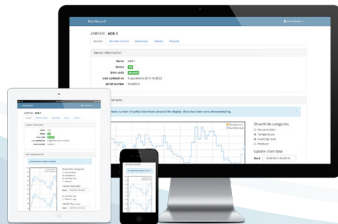
ECOMCAPTURE



BLE communication



ECOMESURE's continuous monitoring systems



Online platform (<https://i-comesure.com>) for visualizing and processing data and setting trigger levels.



ECOMCAPTURE by ECOMESURE is an innovative, connected solution for collecting and analyzing the air quality at polluted sites and soil.

ECOMCAPTURE uses the Bluetooth Low Energy (BLE) protocol to remotely activate air sampling canisters when pollution peaks are detected by an ECOMESURE monitoring device.

The blue LED lights up when sampling is in progress. Users also receive an email or text message with sampling start and end times notifying them that canisters are ready to be taken to the laboratory for analysis.

ECOMCAPTURE intelligently adapts to in-field conditions by collecting air only when threshold values are exceeded. This translates into real cost savings for project owners and engineering firms by enabling them to send out their teams only when necessary.

+ BENEFITS


- + Remote activation of sampling
- + Programmable sampling times
- + Laboratory analysis only when necessary
- + Intermittent or continuous capture

+ APPLICATIONS

- + Environmental remediation
- + Monitoring of contaminated sites and soil
- + Sentinel monitoring of industrial sites

ECOMCAPTURE

TECHNICAL SPECIFICATIONS

| | |
|-----------------------------|---|
| Dimensions | H3.5" x W7" x L7.8" (H90 x W180 x L200 mm) Weight: 1.98 lbs (900 g) |
| Activation of sampling | Automatic or manual |
| Sampling time | Programmable: 1 minute to several hours |
| Sampling indicator | Blue LED lights up during sample collection |
| Connectivity | Bluetooth Low Energy (BLE) |
| Access to data | https://i-comesure.com |
| Web services | Mapping Multi-data display Device status Device remote control Data storage Data download Configurable alerts/alarms Data analytics reports Virtual Integrated Devices (VID) Data ciphering API Database export Data logger |
| Power supply | 12 VDC 2A max Built-in battery for a 10 hours of continuous sampling time |
| Device compatibility | EcomSmart 2, EcomZen 2, EcomTrek |
| Canister compatibility | Passive canisters of all types (not supplied). Partnership with Eurofins for canister supply and laboratory analysis.  |
| Operating temperature range | -20 °C to +50 °C. Charge temperature range of battery: 0 °C to 35 °C. |
| Protection rating | IP66 |
| Certifications | CE class B, FCC class A, RoHS |

Example of a threshold exceedance as seen on the online platform

