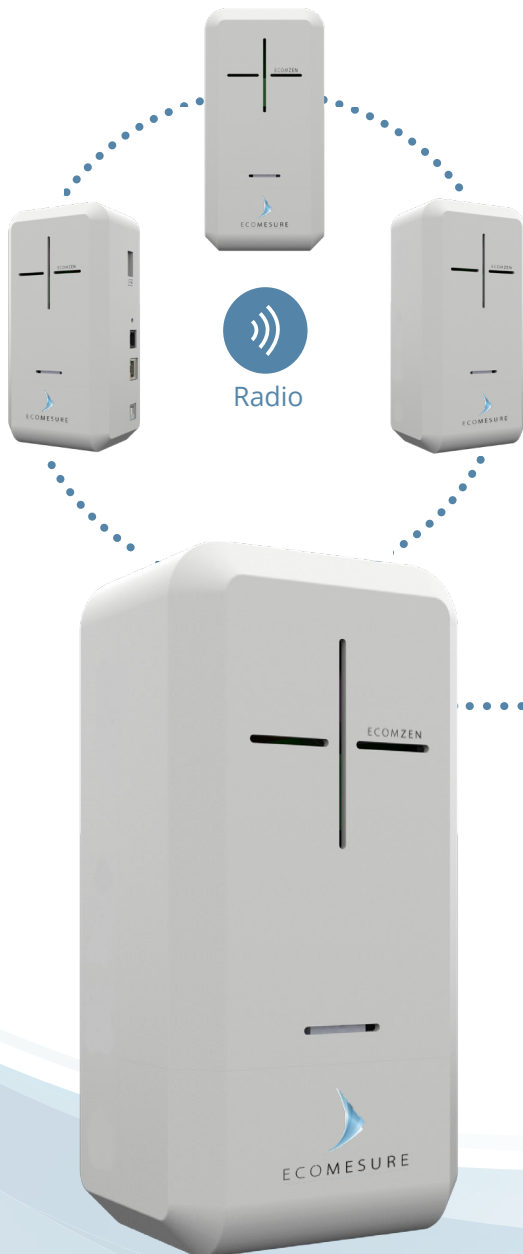


ECOMZEN

CONNECTED STATION OF MULTIPARAMETERS MEASUREMENT FOR INDOOR AIR QUALITY



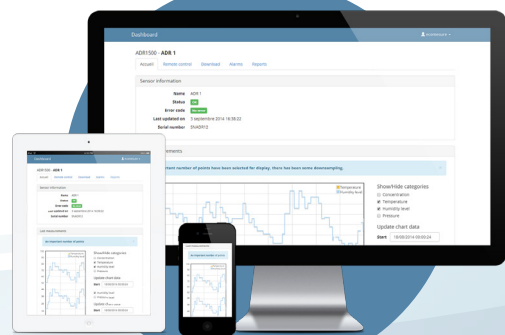
Ecomesure, air quality specialist, designed EcomZen to monitor the key pollutants indoors: CO₂, VOC, CO, NO₂, O₃, NO, SO₂, H₂S, PM_{1/2.5/10} (and others), temperature, relative humidity and pressure.

Easy to install, ECOMZEN connects automatically to the environmental data web platform <https://i-comesure.com> for real-time data monitoring and sensors remote control.

Ethernet, Wi-Fi,
3G/4G, LoRa,
LTE-M, Zigbee



Secure web server
i-comesure.com



+ BENEFITS

- + All-in-one multiparameter monitor
- + Ongoing quality of measurements
- + Easy to install, accurate and affordable
- + Centralized services on i-comesure.com
- + Optimized one-step maintenance

+ APPLICATIONS

- + Public transport, airports
- + Town halls, schools, universities, hospitals
- + Malls, hotels, concert halls
- + Smart buildings, IoT
- + Meeting rooms, open space, restaurants

ECOMZEN

ECOMZEN TECHNICAL SPECIFICATIONS



Dimensions	L8.2" x H7.8" x P3.5" (L210 x l200 x H90 mm) / 0.45 kg
Connectivity	Ethernet Options: 2.4 GHz Wi-Fi - 3G/4G - LTE-M - LoRa - Zibgee Pro
Digital I/O	1 Digital Input / 1 Digital Output
Localization	Accelerometer, GPS
Frequency of measurements	Every minute, possible adjustments according to customer demand (10 min. in LoRa)
Access to data	https://i-comesure.com
Web services	Mapping Multi-mode data display Device status Device remote control Data storage Data downloading Configurable alerts/alarms Data analytics reports Virtual Integrated Devices (VID) Data ciphering API Database export Data logger
Data security	Local + Cloud-based encryption WPA2-Enterprise compatible
Power supply	5 VDC USB 2 A max. Power adapter included (90-264 VAC 50/60Hz) Optional: integrated back-up battery (8h of use, 12h in LoRa)
Certifications	CE class B, FCC class A
Patent	Applicable in France, Europe, United States N° 1552497 (French National Institute of Industrial Property) N° WO2016/151096 (European Patent Office) N° 10064083 (US Patent & Trademark Office)

SENSOR CARTRIDGE SPECIFICATIONS

Select the sensors of your choice:
up to 3 electrochemical,
1 PID, 1 NDIR and 1 optical sensors



Optimized maintenance and calibration:
one-step sensor cartridge replacement



Sensors	Technology	Range	Detection limit
NO ₂	Electrochemical	0-20 ppm	< 0.02 ppm
O ₃		0-20 ppm	< 0.02 ppm
CO		0-50 ppm	< 0.02 ppm
NO		0-20 ppm	< 0.08 ppm
SO ₂		0-50 ppm	< 0.02 ppm
H ₂ S		0-50 ppm	< 0.01 ppm
NH ₃		0-100 ppm	< 3 ppm
HCHO		0-10 ppm	< 0.1 ppm
Cl ₂		0-20 ppm	< 0.2 ppm
HCl		0-20 ppm	< 0.5 ppm
VOC ₅₀ and VOC ₃₀₀₀	PID	0-50 ppm 0-3000 ppm	1 ppb 50 ppb
CO ₂	NDIR	0-5000 ppm	1 ppm
PM ₁ , PM _{2.5} et PM ₁₀	Optical	0-1000 µg/m ³	1 µg/m ³
Environmental parameters	Technology	Measurement Range	Accuracy
Temperature	Temperature sensor	- 4 to 122 °F (-20 to +50 °C)	0.54° F (0.3 °C)
Humidity	RH sensor	0 to 100% RH	2% HR
Pressure	Pressure sensor	950 à 1050 hPa	1 hPa

