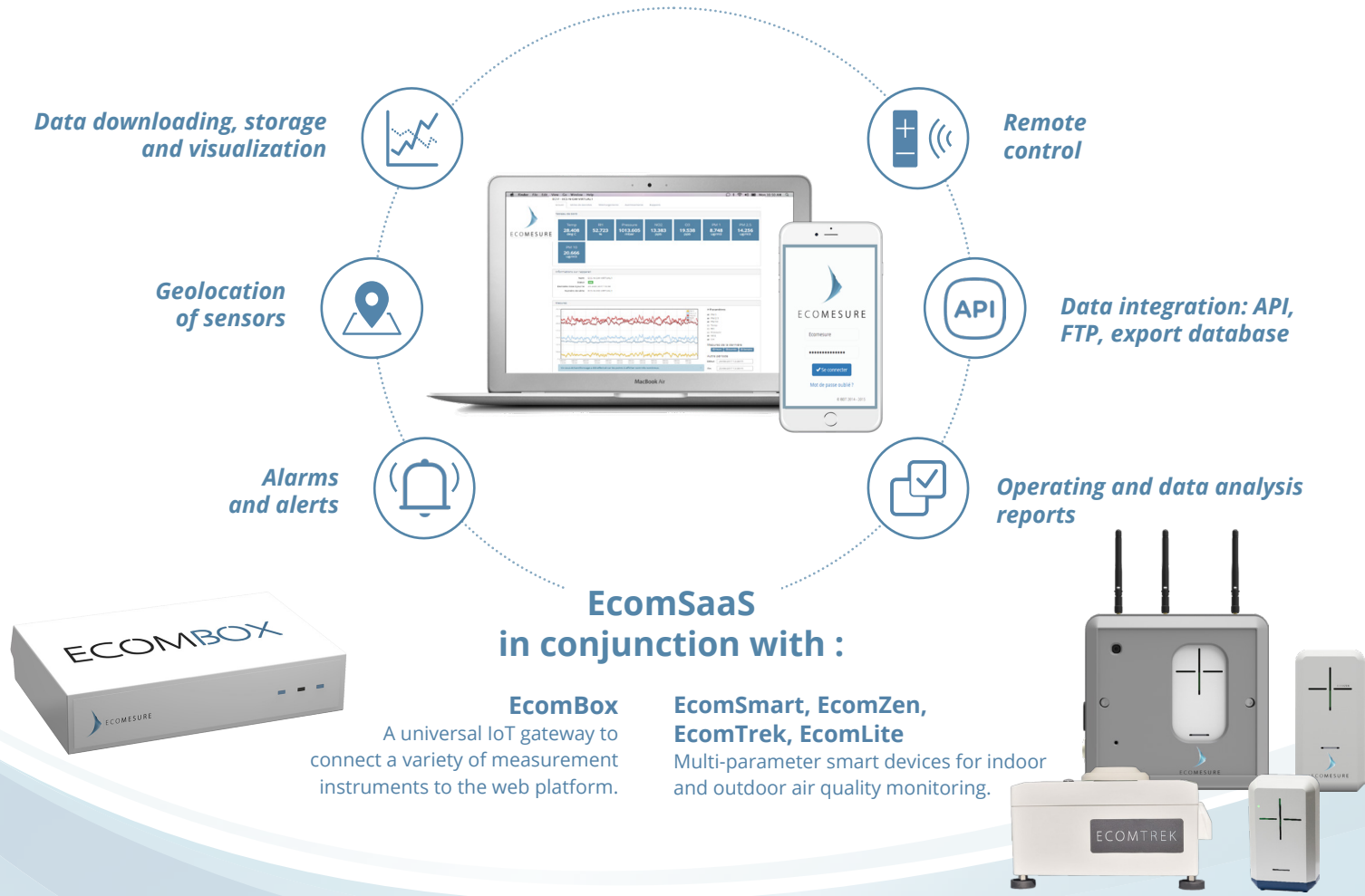


ECOMSAAS

WEB SERVICES FOR REAL-TIME ENVIRONMENTAL DATA MONITORING



i As an integral part of the ECOMESURE connected systems, EcomSaaS is a **service package based on a web platform** <https://ws.i-comesure.com> in SaaS mode which centralizes real-time sensor management and simplifies data analysis.



+ BENEFITS

- + Management of all sensors and data on a single platform in real time
- + Secure data access 24/7 from any terminal
- + Easy data transfer to other platform via FTP or API
- + Intuitive and easy to use
- + Remote updates (Over The Air)

+ APPLICATIONS

- + **Environmental monitoring** : Air, water, noise, electromagnetic waves, meteorology, radioactivity, etc.
- + **Smart Factories** : Industrial process control, metering, servo systems, traceability etc.
- + **Smart Grid** : Resources management, energy consumption management, waste treatment, water treatment, etc.
- + **Smart Building** : Technical building management and CSR policy
- + **Smart Cities** : Consolidation and integration of urban data

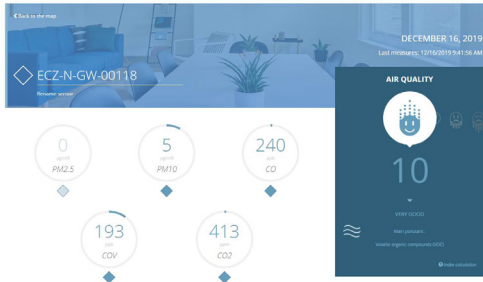
ECOMSAAS



Simple and intuitive displays

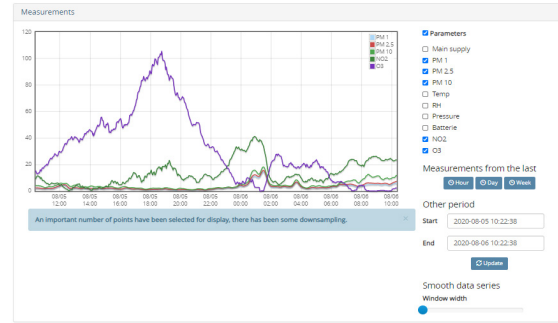
Index

Air quality monitoring with EcomZen, EcomSmart and EcomLite



Management

Control of all types of sensor, management of environmental and operational data



Three pricing levels, with or without a commitment

SERVICES	STARTER	MANAGER	EXPERT
Mapping	✓	✓	✓
Real-time data display	✓	✓	✓
Multi-display mode (index and management)	✓	✓	✓
Device status	✓	✓	✓
Remote control		✓	✓
Cloud data storage ¹		✓	✓
Instant data downloading or FTP		✓	✓
Configurable alerts/alarms ²		✓	✓
Access to data analysis reports		✓	✓
Rest API ³		✓	✓
Fast API ³			✓
Multi-instrument management			✓
Advanced data encryption			✓
Advanced alert system			✓
Database export			✓
Data logger			✓

Annual subscriptions or MOD "Measurement On Demand"

- (1) Last 12 months of data available (adjustable)
- (2) Limited to 3 E-mail addresses and 3 mobile phone numbers, 1 email/hour, 1 SMS/day
- (3) Discover [here](#) the differences between the two API levels