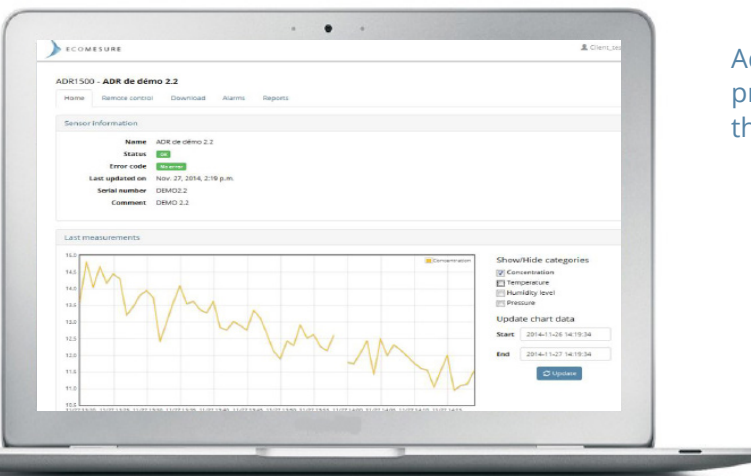
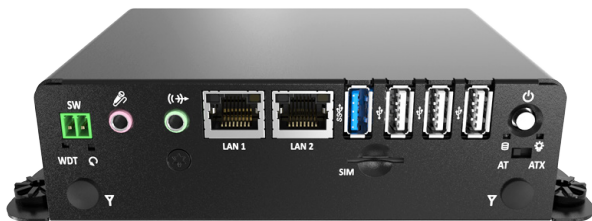


ECOMBOX 2

UNIVERSAL COMMUNICATION GATEWAY



The EcomBox is an **IoT gateway** that connects various measurement instruments to the web platform <https://ws.i-comesure.com> for **remote monitoring**, remote maintenance and real-time data management.

The EcomBox 2 is an enhanced version of the original EcomBox, integrated into an industrial mini-PC. It offers superior performance in terms of processing, storage, and data security.

Additionally, the management of communication protocols for different instruments is optimized on the Ecomesure platform, greatly facilitating updates.

+ BENEFITS

- + Compatibility with all types of instruments
- + Large storage capacity: up to 128GB
- + Continuous remote access and control
- + Optimized on-site maintenance
- + Easy connection and configuration

+ APPLICATIONS

- + Industrial process control
- + Continuous emissions monitoring
- + Smart City
- + Smart Agriculture
- + Industry 4.0

ECOMBOX 2

TECHNICAL SPECIFICATIONS

Dimensions	L142 x W101 x H41,5 mm (L5.6 " x W3.98 " x H1.6 ") / 0.58 kg
Ports	Wi-Fi 4 USB ports (expandable up to 8 ports) 2 RS232 ports ((expandable up to 4 ports) 2 Ethernet ports
Communication option	Cellular
Processing power and computation	Quad-Core Processor with 3GB and 8GB of RAM
Access to data	https://ws.i-comesure.com
Web services	Mapping Multi-mode data display Device status Device remote control Data storage Data downloading Configurable alerts/alarms Data analytics reports Virtual Integrated Devices (VID) Data encryption API Database export Data logger
Data security	Local + Cloud-based encryption WPA2-Enterprise compatible
Data storage	Built-in storage ranging from 32 GB to 128 GB Web storage
Power supply	100-240 VAC, 60W, 50/60 Hz EcomBox 2: 12V 5A max Power adapter included
Operating conditions	Temperature: 32 to 104 °F (-20°C to +50 °C) Hygrometry: 10% - 95% without condensation Altitude: < 2000m
Certifications	CE, FCC class A
Patent	Applicable in France, Europe, United States

