

# ECOMVIBE

## CONNECTED VIBRATION MONITOR



Ideal for monitoring vibration in an easy and cost-effective way, Ecomvibe offers improved ruggedness, including a metal case and connectors and water resistance.

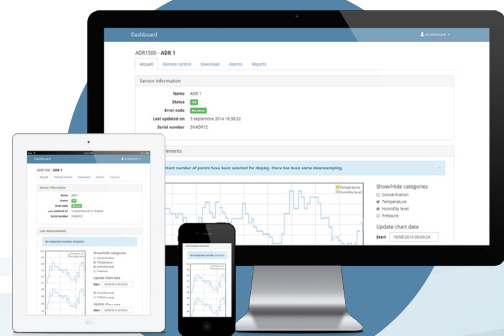
Easy to install, Ecomvibe connects automatically to the web platform providing you with many services to manage real-time vibration online: instant data, vibration reports, downloads and warnings.



Ethernet, 3G or Wi-Fi



Secured web server  
i-comesure.com



### + BENEFITS

- + Continuous measurement 24h/7 days a week
- + Real-time measurement data
- + Reliable field equipment
- + Alerts by e-mail and SMS
- + Simple, accurate and affordable

### + APPLICATIONS

- + Blast-monitoring for compliance & near-field blast analysis
- + Remote monitoring & structural monitoring
- + Sound and Underwater monitoring
- + Pile driving
- + Heavy transportation

# ECOMVIBE

## CONNECTED VIBRATION MONITOR

### ECOMVIBE SPECIFICATIONS

Sensors - Geophone		
Response Standard	ISEE Seismograph Specification or DIN 45669-1	
Range	0.13 to 254 mm/s (0.005 to 10 in/s)	
Resolution	0.00788 mm/s (0.00031 in/s)	
Frequency Range (ISEE / DIN)	2 to 250 Hz, within zero to -3 dB of an ideal flat response / 1 to 315 Hz or 1 to 80 Hz	
Accuracy (ISEE / DIN)	+/- 5% or 0.5 mm/s (0.02 in/s), whichever is larger, between 4 and 125 Hz / DIN 45669-1 standard	
Transducer Density	2.13 g/cc (133 lbs/ft <sup>3</sup> )	
Maximum Cable Length (ISEE / DIN)	75 m (250 ft) / 1,000 m (3,280 ft)	
Optional Advanced Sensors	High Pressure Microphone, High Frequency Geophone, Uniaxial and Triaxial Accelerometer, and Hydrophone Waveform, Waveform Manual	
General specifications		
Dimensions	25.4(l) x 11.75(w) x 10.80(h) cm (10.00 x 4.63 x 4.25 in); length dimension includes connectors and dust caps	
Unit Weight	2.27 kg (5 lbs)	
Battery	10 days	
User Interface	10 domed tactile with separate keys for common functions	
Display	7-line x 32-character, high-contrast, multi-color backlit LCD	
Auxillary Inputs and Outputs	External Trigger and Remote Alarm	
Environmental	LCD Operating Temperature	-20 to 45 °C (-4 to 113 °F)
	Electronics Operating Temperature	-40 to 45 °C (-40 to 113 °F)
Water Resistance	IP67 – submerge to 30 cm (1 ft.) for 24 hours	
Electrical Standards	CE Class B	



# ECOMESURE